

Instalando o PostgreSQL

14.5

https://www.enterprisedb.com/downloads/postgres-postgresql-downloads

The screenshot shows the EnterpriseDB website's PostgreSQL download page. The page features a navigation bar with the EDB logo and a menu with items like 'Why EDB?', 'Cloud PostgreSQL', 'Postgres Software', 'Services & Support', 'Resources', and 'Plans'. A banner below the navigation bar reads 'Download PostgreSQL' and 'Open source PostgreSQL packages and installers from EDB'. The main content is a table listing PostgreSQL versions and their availability for different operating systems. A red dashed box highlights the row for PostgreSQL version 14.5, which is not supported for Linux x86-32, Mac OS X, and Windows x86-64.

PostgreSQL Version	Linux x86-64	Linux x86-32	Mac OS X	Windows x86-64	Windows x86-32
14.5	postgresql.org	postgresql.org			Not supported
13.8	postgresql.org	postgresql.org			Not supported
12.12	postgresql.org	postgresql.org			Not supported
11.17	postgresql.org	postgresql.org			Not supported
10.22					
9.6.24*					
9.5.25*					
9.4.26*					
9.3.25*					

PACKAGED BY



Setup - PostgreSQL

Welcome to the PostgreSQL Setup Wizard.



PostgreSQL

< Back

Next >

Cancel

Setup

Installation Directory



Please specify the directory where PostgreSQL will be installed.

Installation Directory



VMware InstallBuilder

Selecionar pasta

ADMIN >

Pesquisar ADMIN

Organizar Nova pasta

Acesso rápido

Área de Traba

Downloads

Documentos

Imagens

2022-2

IoT

OneDrive

Este Computador

Área de Trabalh

Documentos



Área de Trabalho



Contatos



Documentos



Downloads



Favoritos



Imagens



Jogos Salvos



Links



Músicas



Objetos 3D



OneDrive



Pesquisas



Vídeos

Pasta:

Selecionar pasta

Cancelar



Select Components

Select the components you want to install; clear the components you do not want to install. Click Next when you are ready to continue.

- PostgreSQL Server
- pgAdmin 4
- Stack Builder
- Command Line Tools

Click on a component to get a detailed description

 Setup



Data Directory



Please select a directory under which to store your data.

Data Directory



VMware InstallBuilder

< Back

Next >

Cancel

Setup

Password

Please provide a password for the database superuser (postgres).

Password

Retype password

VMware InstallBuilder

< Back Next > Cancel



 Setup



Port



Please select the port number the server should listen on.

Port

VMware InstallBuilder

< Back

Next >

Cancel



Advanced Options

Select the locale to be used by the new database cluster.

Locale [Default locale] ▼

- Portuguese, Brazil ▲
- Portuguese, Portugal
- Punjabi, India
- Punjabi, Pakistan
- Quechua, Bolivia
- Quechua, Ecuador
- Quechua, Peru
- Romanian, Moldova
- Romanian, Romania
- Romansh, Switzerland ▼



Setup



Pre Installation Summary

The following settings will be used for the installation::

Installation Directory: C:\Program Files\PostgreSQL\14
Server Installation Directory: C:\Program Files\PostgreSQL\14
Data Directory: C:\Program Files\PostgreSQL\14\data
Database Port: 5432
Database Superuser: postgres
Operating System Account: NT AUTHORITY\NetworkService
Database Service: postgresql-x64-14
Command Line Tools Installation Directory: C:\Program Files\PostgreSQL\14
pgAdmin4 Installation Directory: C:\Program Files\PostgreSQL\14\pgAdmin 4
Stack Builder Installation Directory: C:\Program Files\PostgreSQL\14
Installation Log: C:\Users\ADMIN\AppData\Local\Temp\install-postgresql.log

VMware InstallBuilder

< Back

Next >

Cancel

 Setup



Ready to Install



Setup is now ready to begin installing PostgreSQL on your computer.

VMware InstallBuilder

< Back

Next >

Cancel

Setup



Installing

Please wait while Setup installs PostgreSQL on your computer.

Installing

Unpacking C:\Program Files\PostgreSQL\14\include\xmlmodule.h



VMware InstallBuilder

< Back

Next >

Cancel

PACKAGED BY



Completing the PostgreSQL Setup Wizard

Setup has finished installing PostgreSQL on your computer.

Launch Stack Builder at exit?

- Stack Builder may be used to download and install additional tools, drivers and applications to complement your PostgreSQL installation.

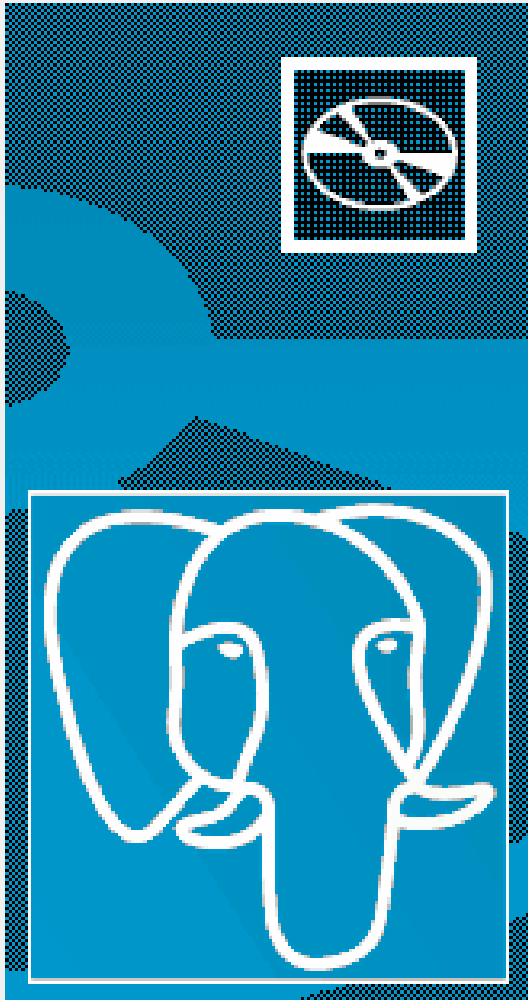


PostgreSQL

< Back

Finish

Cancel



Welcome to Stack Builder!

This wizard will help you install additional software to complement your PostgreSQL or EnterpriseDB Postgres Plus installation.

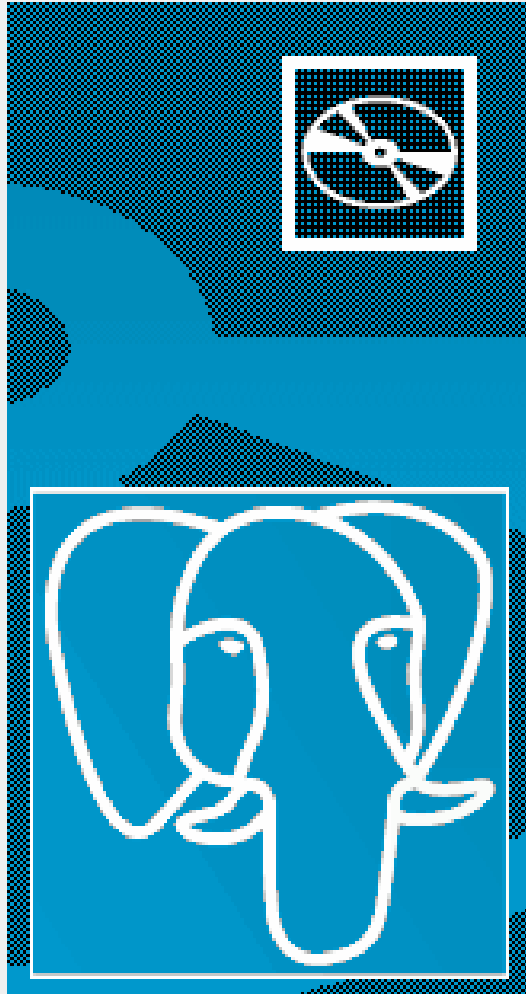
To begin, please select the installation you are installing software for from the list below. Your computer must be connected to the Internet before proceeding.

Proxy servers

< Back

Next >

Cancel



Please select the applications you would like to install.

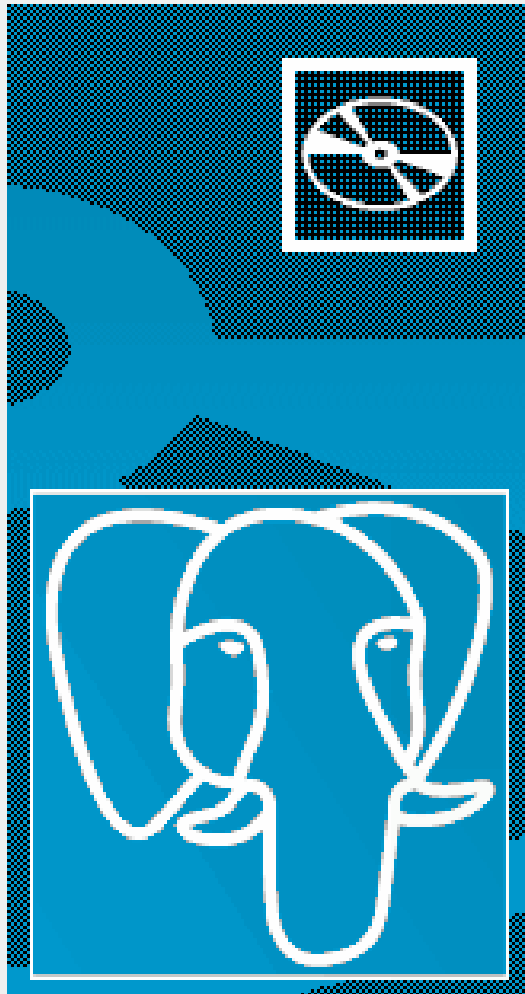
- Categories**
- Add-ons, tools and utilities
- Database Drivers
- Database Server
- Registration-required and trial products
- Spatial Extensions
- Web Development



< Back

Next >

Cancel



Please select the applications you would like to install.

- Categories
- Add-ons, tools and utilities
- Database Drivers
 - Npgsql v3.2.6-3
 - pgJDBC v42.2.18-1
 - psqLODBC (32 bit) v13.00.0000-2
 - psqLODBC (64 bit) v13.00.0000-2
- Database Server
- Registration-required and trial products
- Spatial Extensions
- Web Development

< Back

Next >

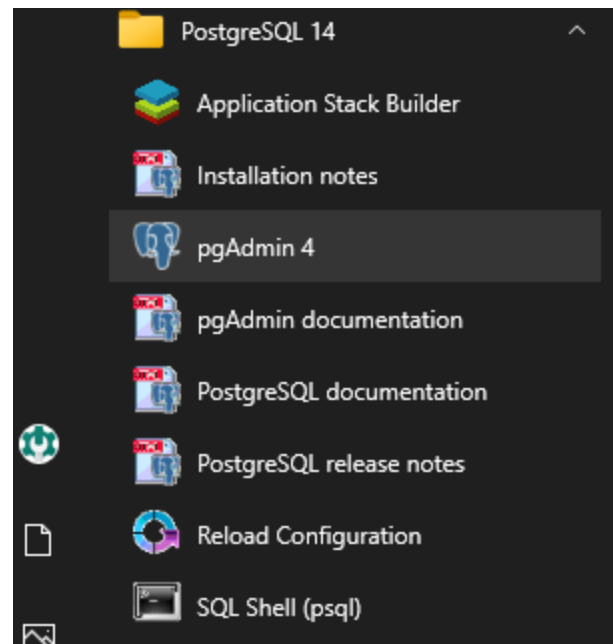
Cancel

Exit wizard?

Are you sure you want to close the Stack Builder wizard?

Sim

Não





pgAdmin

Management Tools for PostgreSQL

Waiting for pgAdmin 4 to start...


pgAdmin 4

pgAdmin File Object Tools Help

Browser Dashboard Properties SQL Statistics Dependencies Dependents

> Servers

Welcome




pgAdmin

Management Tools for PostgreSQL


Feature rich | Maximises PostgreSQL | Open Source

pgAdmin is an Open Source administration and management tool for the PostgreSQL database. It includes a graphical administration interface, an SQL query tool, a procedural code debugger and much more. The tool is designed to answer the needs of developers, DBAs and system administrators alike.

Quick Links




Add New Server




Configure pgAdmin


Getting Started




PostgreSQL Documentation



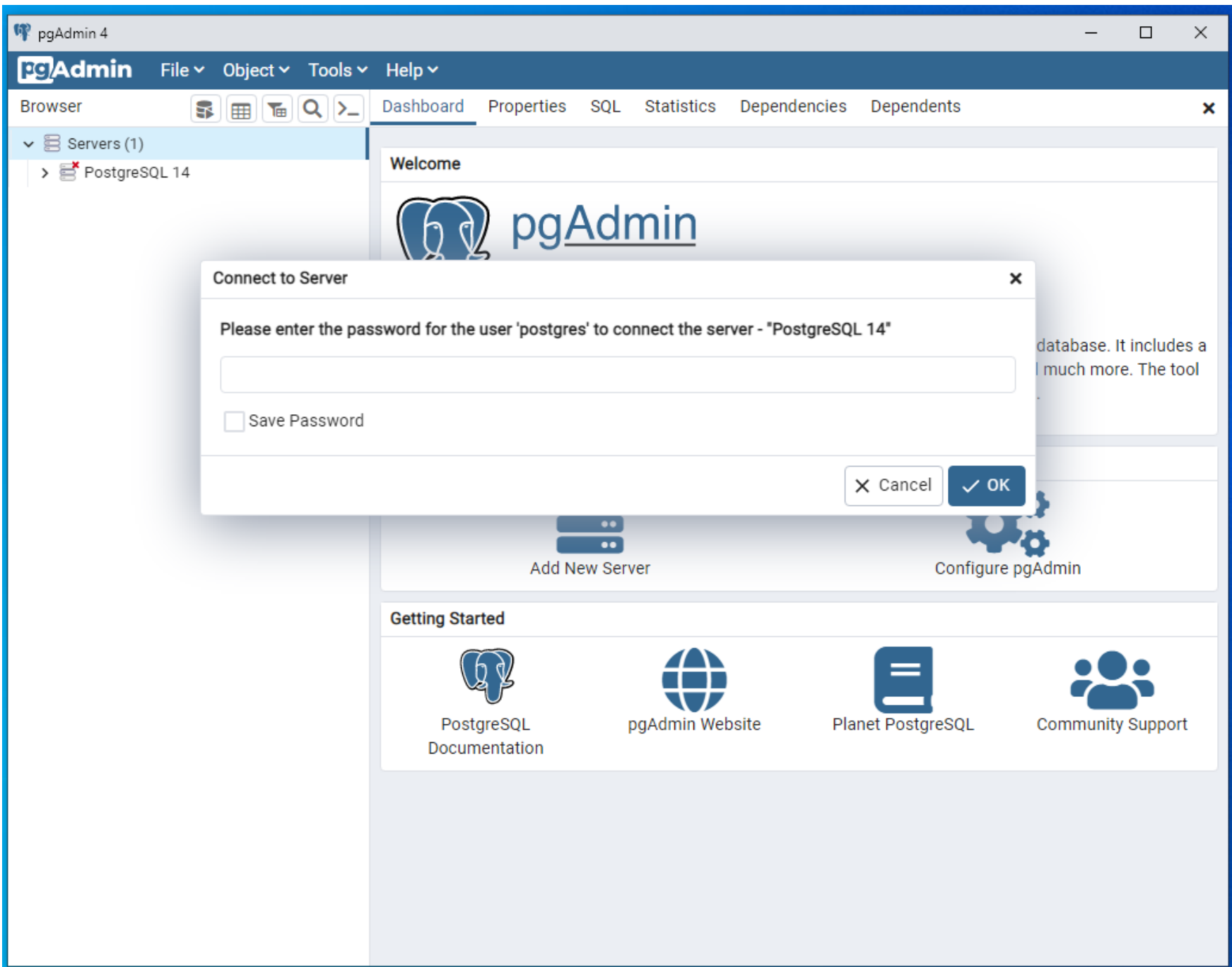
pgAdmin Website



Planet PostgreSQL



Community Support



Servers (1)

> PostgreSQL 14

Welcome



pgAdmin

Connect to Server



Please enter the password for the user 'postgres' to connect the server - "PostgreSQL 14"

.....

Save Password

Cancel

OK

